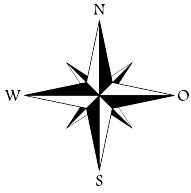




Sa Pobla Social Housing Project





Design Team : Jose Ripoll Vaquer
Juan Miguel Tizon Gara

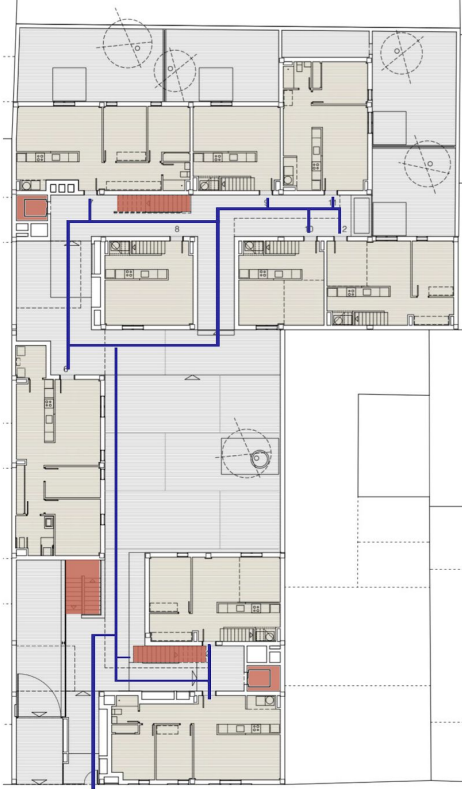
Plot Area : 1.145 m²
Gross Area : 2.498 m²

Work started on date : 16th June 2010
Work completion date : 11th September 2012

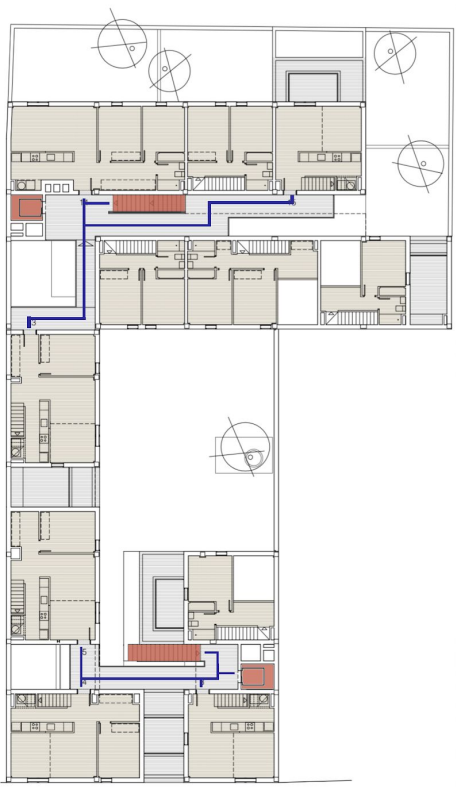




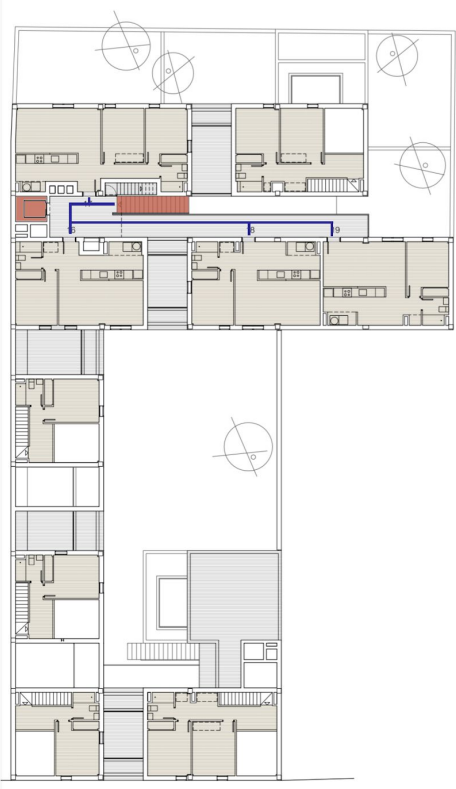
Circulation



Ground floor



First floor



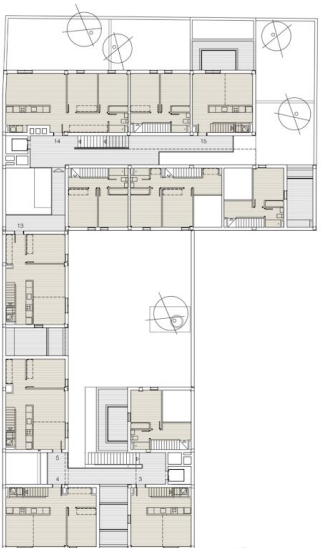
Second floor

Typology 1

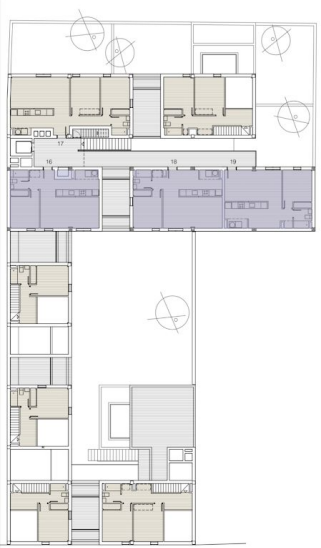
1 floor



Ground floor



First floor



Second floor

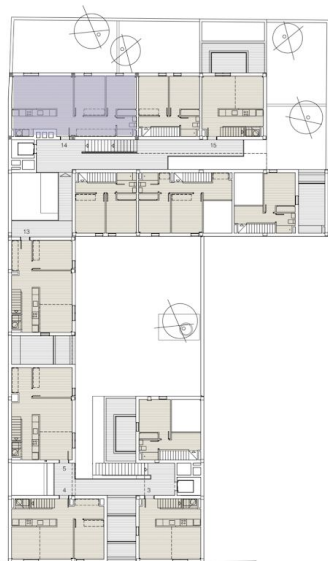


Typology 2

1 floor



Ground floor



First floor



Second floor

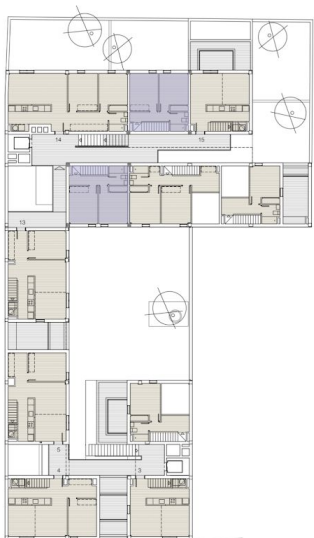


Typology 3

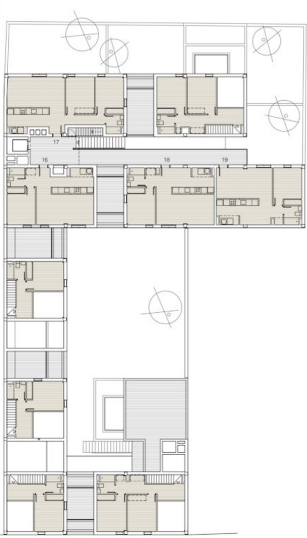
2 floor



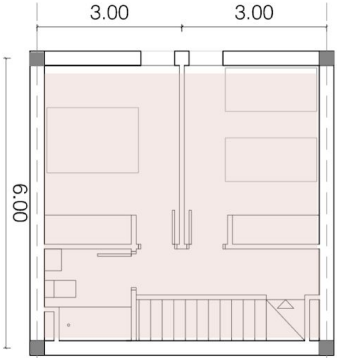
Ground floor



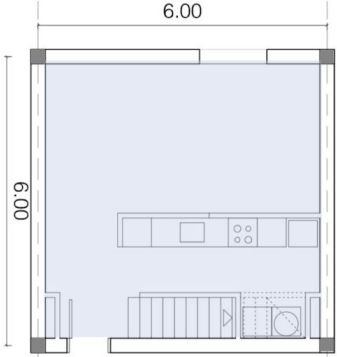
First floor



Second floor



B+B



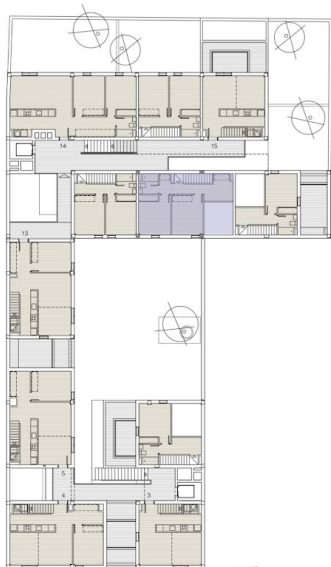
A

Typology 4

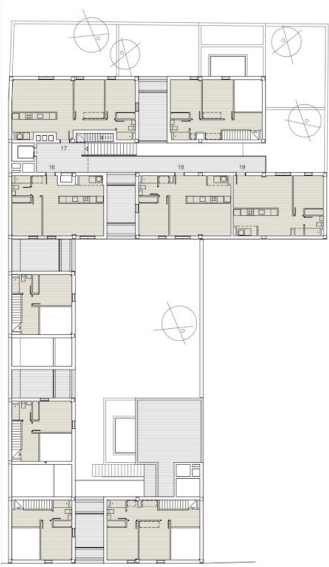
2 floor



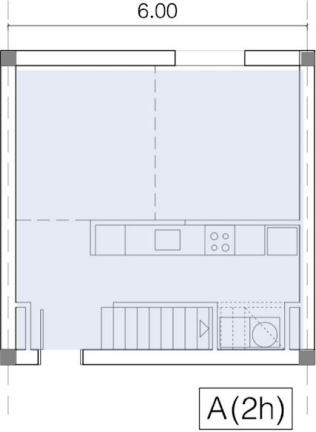
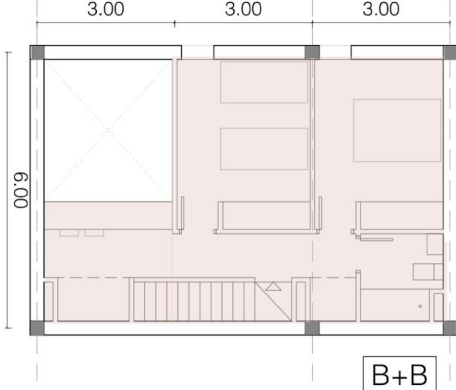
Ground floor



First floor



Second floor

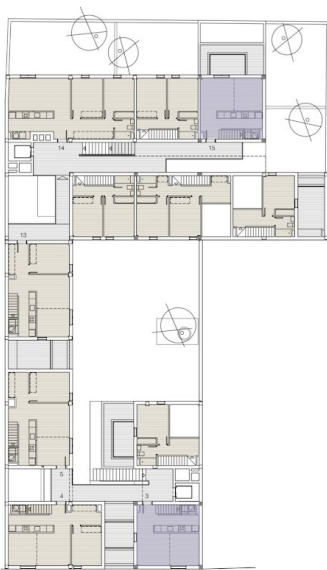


Typology 5

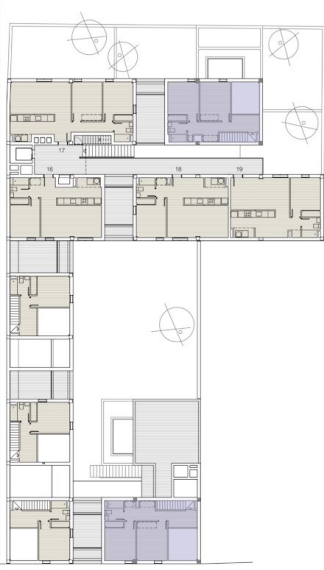
2 floor



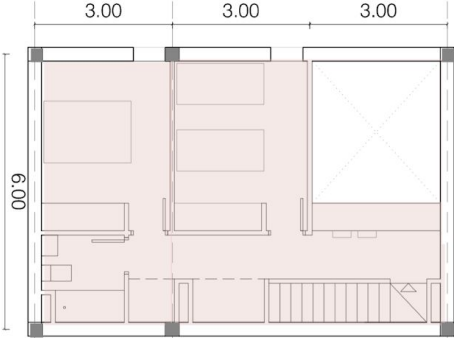
Ground floor



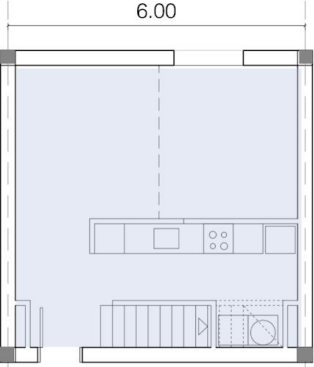
First floor



Second floor



B+B



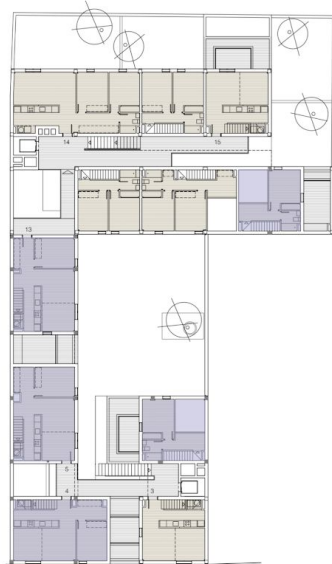
A(2h)

Typology 6

2 floor



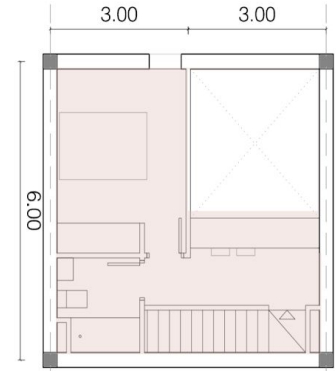
Ground floor



First floor



Second floor



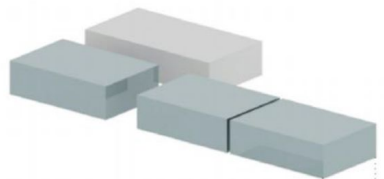
B



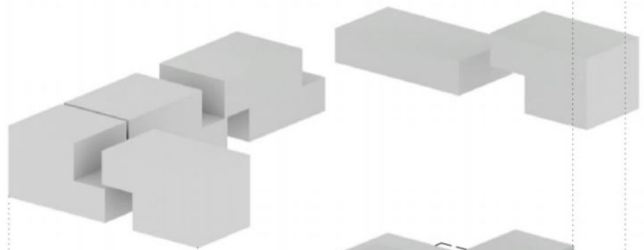
B+A(2h)

3D Geometry

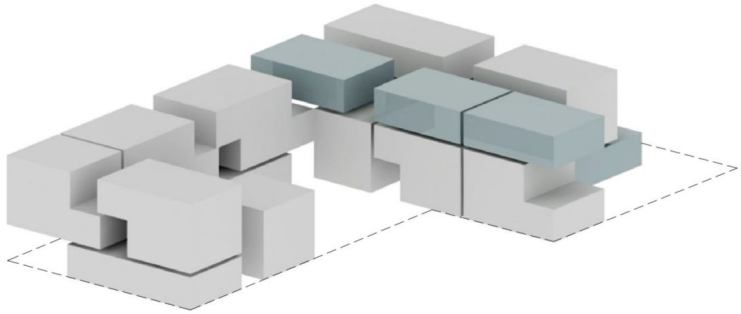
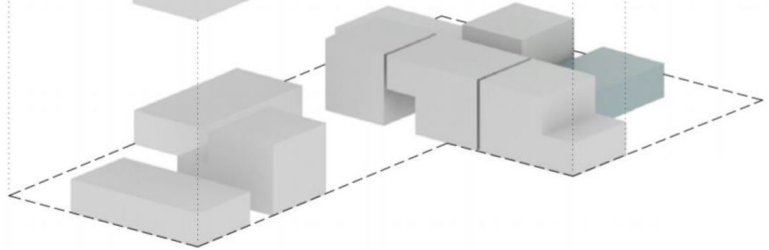
Second floor



First floor



Ground floor





perforated clay masonry brick

- an artificial material mainly made of clay
- usually used in the construction layer of outside and inside walls
- relatively heavy, ideal for insulating sound and storing heat energy

thermal conductivity λ : 0,56 - 1,30W/(m*K)

specific thermal capacity : 1kJ/(kg*K)

density : 1200 - 2200 kg/m³



passive ventilation

circulation of air in and out of indoor space

- energy saving
- lower use of mechanical systems in building

solar thermal collector

transfer of heat energy to tank through separate heat exchanger

- provision of 70% hot water
- free of charge
- no emission of CO₂

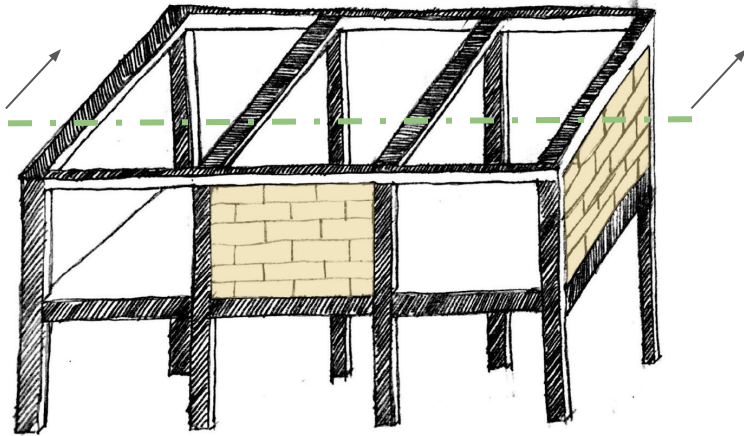


hydraulic concrete tile paving

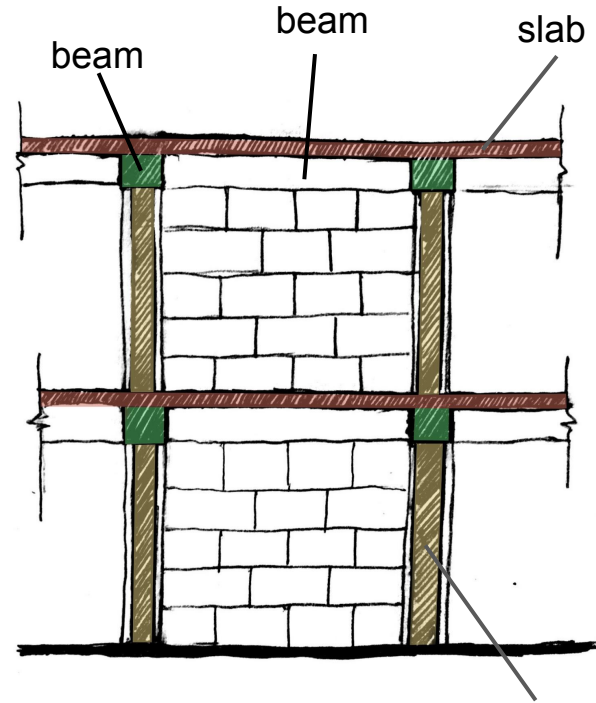
- low cost
- easy installation

high pressure compact laminate panels

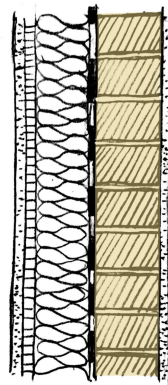
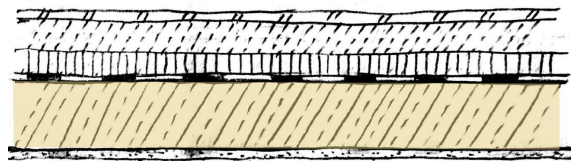
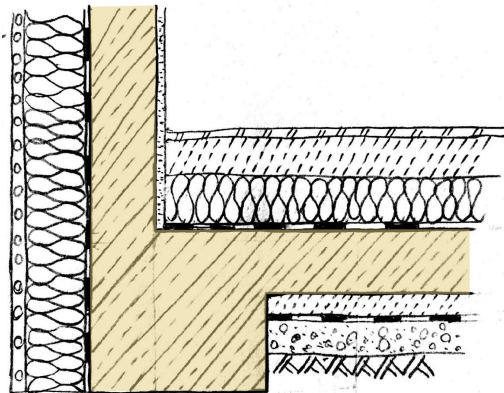
- excellent stability
- durable & resistance
against impacts



concrete structure infilled with perforated clay masonry bricks



perforated clay masonry brick



Conclusion

- Circulations that make the space interesting
- Using local materials
- Arrange the project in a way that fits with the surroundings
- Follow the same arrangements as the existing buildings next to the plot

